



### Newfoundland and Labrador:

- Listed in Maclean's Magazine's Top 10 Friendliest Cultures in the World.
- The Happiest Province according to KRG hospitality.
- Home to Cape Spear Lighthouse, the most easterly point in Canada.
- According to the Statistics Canada 2016 census, 20.7% of Newfoundlanders claim Irish ancestry.
- Roughly 90% of icebergs seen off Newfoundland and Labrador come from the glaciers of western Greenland.
- Newfoundland and Labrador is one of the most spectacular whale watching places on Earth.



# FACULTY OF ENGINEERING AND APPLIED SCIENCE

## UNDERGRADUATE

### FIND YOUR COMMUNITY

80

professors

11

top 2% researchers in the world

1300

undergrad students

\$14M

research grants annually

925

grad students



### Contact

Faculty Of Engineering and Applied Science  
Memorial University of Newfoundland  
St. John's, NL, Canada  
709-864-8813 | [mun.ca/engineering](http://mun.ca/engineering) | [enr@mun.ca](mailto:enr@mun.ca)

f MUNEngineering    ✕ MUN\_Engineering

@ memorial\_engineering



### Co-op Program:

- Started in 1969, the Engineering Co-operative Program is one of the oldest and largest undergrad co-op education programs in Canada.
- The program is fully accredited by Co-operative Education and Work-Integrated Learning (CEWIL) Canada.
- Students travel to new places, work in cool industries, and get paid! They are employed throughout Canada, US and internationally.
- Students graduate with up to 2 years of work experience and are more competitive in the job market as compared to graduates from other schools with no co-op programs.

**Admission Deadlines**

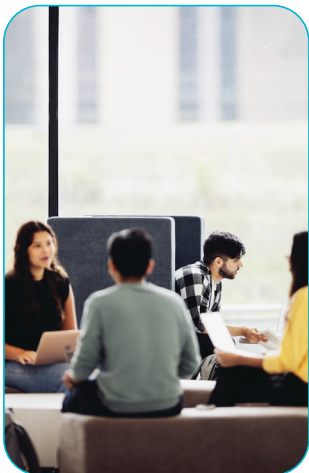
Fall Intake:  
May 31<sup>st</sup>

Winter Intake:  
October 1<sup>st</sup>

Spring Intake:  
February 1<sup>st</sup>

Apply: 

**How Do I Become An Engineering Student?**  
Admission to Faculty of Engineering is competitive. The Admissions Committee reviews your grades in the following five courses: Pre-Calculus 3208, Physics 3204, Chemistry 3202, English Language Arts 3201, and Advanced Mathematics 3200. In general, grades above 80% in those courses are normally required for consideration. Students graduating from high schools in other Canadian provinces or international secondary schools should have equivalent courses to the NL courses listed above.



### English Language Requirements For International Students

Students who need to provide proof of English language proficiency via a standardized test for general admission will also be required to complete the Engineering English Test (EET). To qualify to write this e-proctored test, students must achieve a minimum of the following English test scores:

	IELTS	TOEFL	CAEL	PTE-A
Overall	6.5	90	70	61
Reading	6.0	20	60	60
Listening	6.0	20	60	60
Speaking	6.5	25	70	60
Writing	6.5	25	70	63

### Program Structure:

Year	Fall	Winter	Spring
1	Engineering One (EO)		
2	AT3	WT	AT4
3	WT	AT5	WT
4	AT6	WT	AT7
5	WT	AT8	

AT: Academic Term, WT: Work Term



The common first year of the engineering program is referred to as Engineering One (EO). It includes introductory engineering courses, plus English, math and basic science (physics and chemistry) courses.

**\$400,000** in SCHOLARSHIPS awarded every year

The Engineering courses introduce students to the engineering problem-solving, analysis, design, communication, and teamwork. Students will develop an understanding of the different engineering disciplines, as well as the interdisciplinary nature of engineering practice.

Above **90%** placement rate for WORK TERMS

Students completing the requirements of EO must apply for their major assignment. This is a competitive process; students are placed in majors according to their EO Promotion Average.

Over **20** student TEAMS competing internationally

